



PROPOSED RESIDENTIAL COMPLEX FOR SHIV CONSTRUCTION ON S.NO. 307 AT CLASSIC PARK, SANGLI

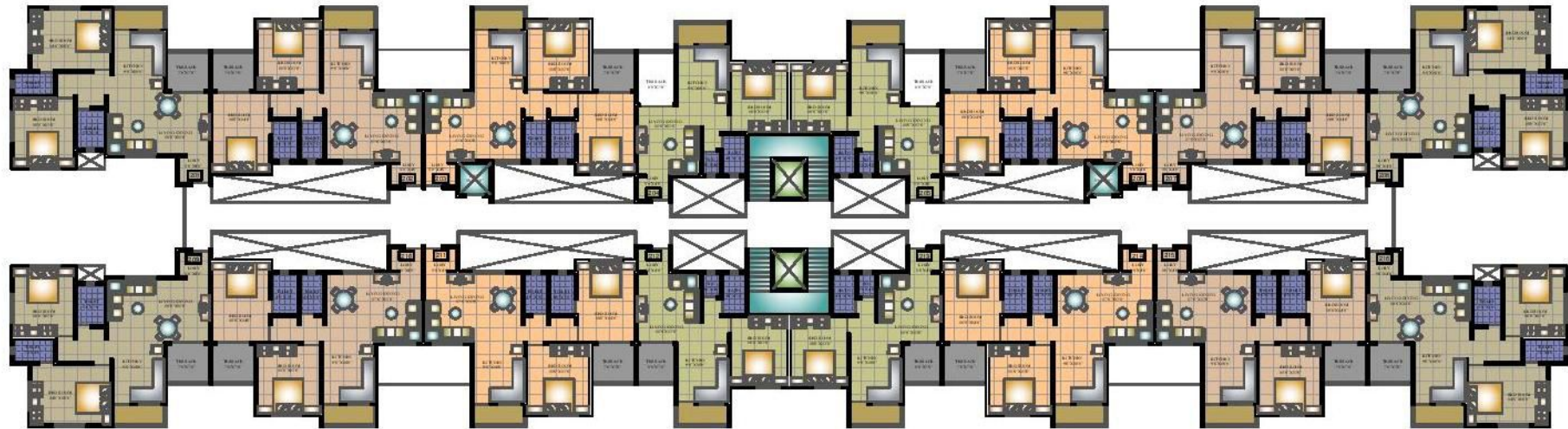


SNEH-RAJ CONSULTANT
 ARAMBERNATH SHINDE
 B.(ARCH)
 PH. 9822430678

TYPICAL 1ST, 3RD,
 5TH, 7TH FLOOR

19/02/16





PROPOSED RESIDENTIAL COMPLEX FOR SHIV CONSTRUCTION ON S.NO. 307 AT CLASSIC PARK, SANGLI



SNEH-RAJ CONSULTANT
 AR.AMERNATH SHINDE
 B.(ARCH)
 PH. 9822430678

TYPICAL 2ND,4TH,6TH
 FLOOR

19/02/16

